

TREPA

Transforming Eastern Province through Adaptation



Rwanda Forestry Authority



GREEN
CLIMATE
FUND



Output 3.3: Enhancing tree seed and seedling supply to provide diverse and climate adapted species and varieties within the framework of TREPA 2022-2027

Breeding Seed Orchard (BSO) Establishment report,
Pterygota mildbraedii– Nyagatare

Albin Lobo, Marie Claire Twiragijimana, Yves Shema

February 2024

BSO Design

Seeds collected in: June 2023

Seeds sowed in: July 2023

Trial Planted in: November 2023

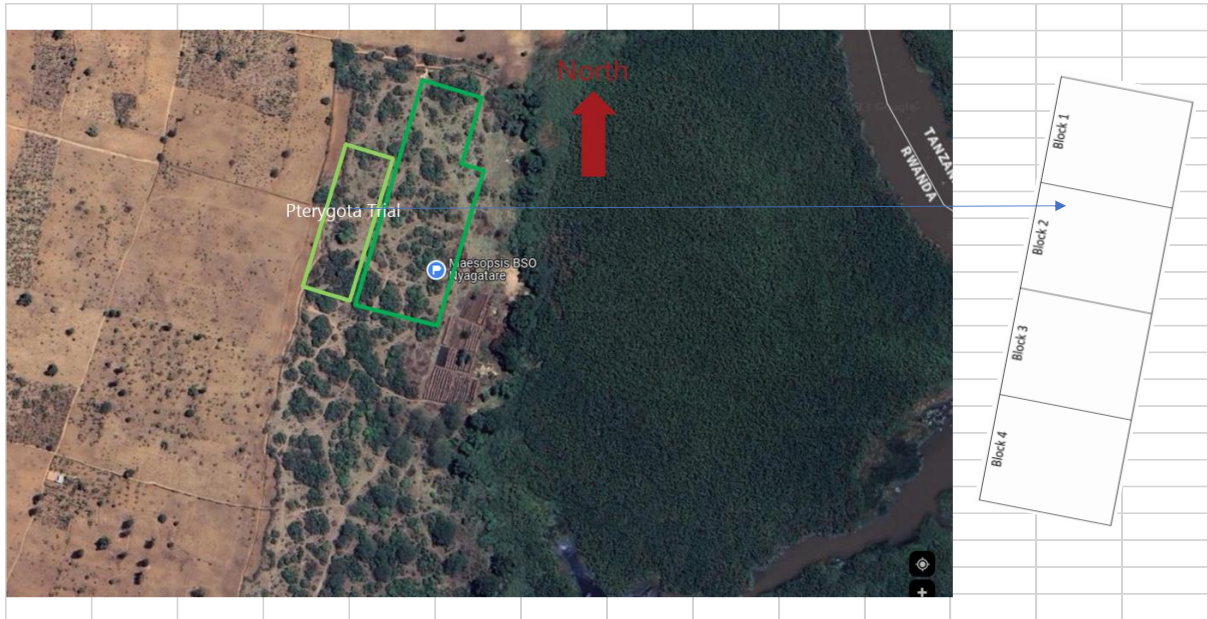
Location: Latitude 1°17'17.2"S; Longitude 30°33'24.6"E

Parallel trial: *Pterygota mildbraedii* BSO in Kirehe

Trial design	Family block trial
No of provenances	1
No of families	4
No of Blocks	4
No of rows in each block	10
No of columns in each block	10
No of plants within each block	100
Spacing	2 metre x 2 metre
Total number of plants	400 *
Total area of BSO in square metres	1700
Total area of BSO in Hectares	0,17

*Family 3 only had 88 plants, so in effect the trial only has 388 plants (3 complete blocks for families 1,2 and 4 and one incomplete block for family 3 with 88 plants)

Location map and positions of Blocks



Provenances and Families

Provenance	Mother Trees	Family	Label
Ngoma	1	1	Family - 01
Ngoma	2	2	Family - 02
Ngoma	3	3	Family - 03
Ngoma	4	4	Family - 04
