

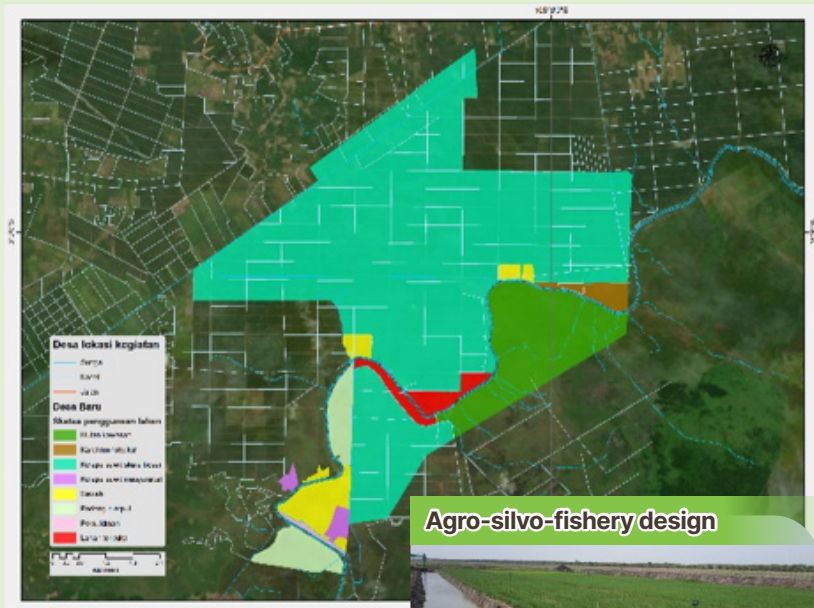
Business Model of Agro-silvo-fishery in Baru Village, Rambutan Subdistrict, Banyuasin District



© World Agroforestry (ICRAF)

Baru Village, located in the Sugihan-Saleh River Peat Hydrological Unit (PHU) is home to a predominantly indigenous community. The village is located in boundary area of Padang Sugihan Wildlife Reserve. It is accessible via a dirt road from Durian Gadis Village.

- Oil palm plantations dominate the village's land cover, followed by secondary forests on peatland.
- The local community cultivates rubber and maintain rice fields on a small portion of the overall land of the village.
- The rice fields are situated in inland swamps and tidal wetlands, allowing for only one annual harvest with minimal management practices.
- Unpredictable flooding and tidal fluctuations lead to unused swampy lands.
- Modifying water management practices is key strategy to manage peat swamps area for cultivation purposes.
- Agro-silvo-fishery systems and stingless beekeeping are being developed to enhance food security, improve the environment, and boost community livelihoods.
- Organic fertiliser business development aims to utilise livestock manure, improve soil fertility, and increase income.
- Village-Owned Enterprise (BUMDes) is the village's organisation in charge of these activities.

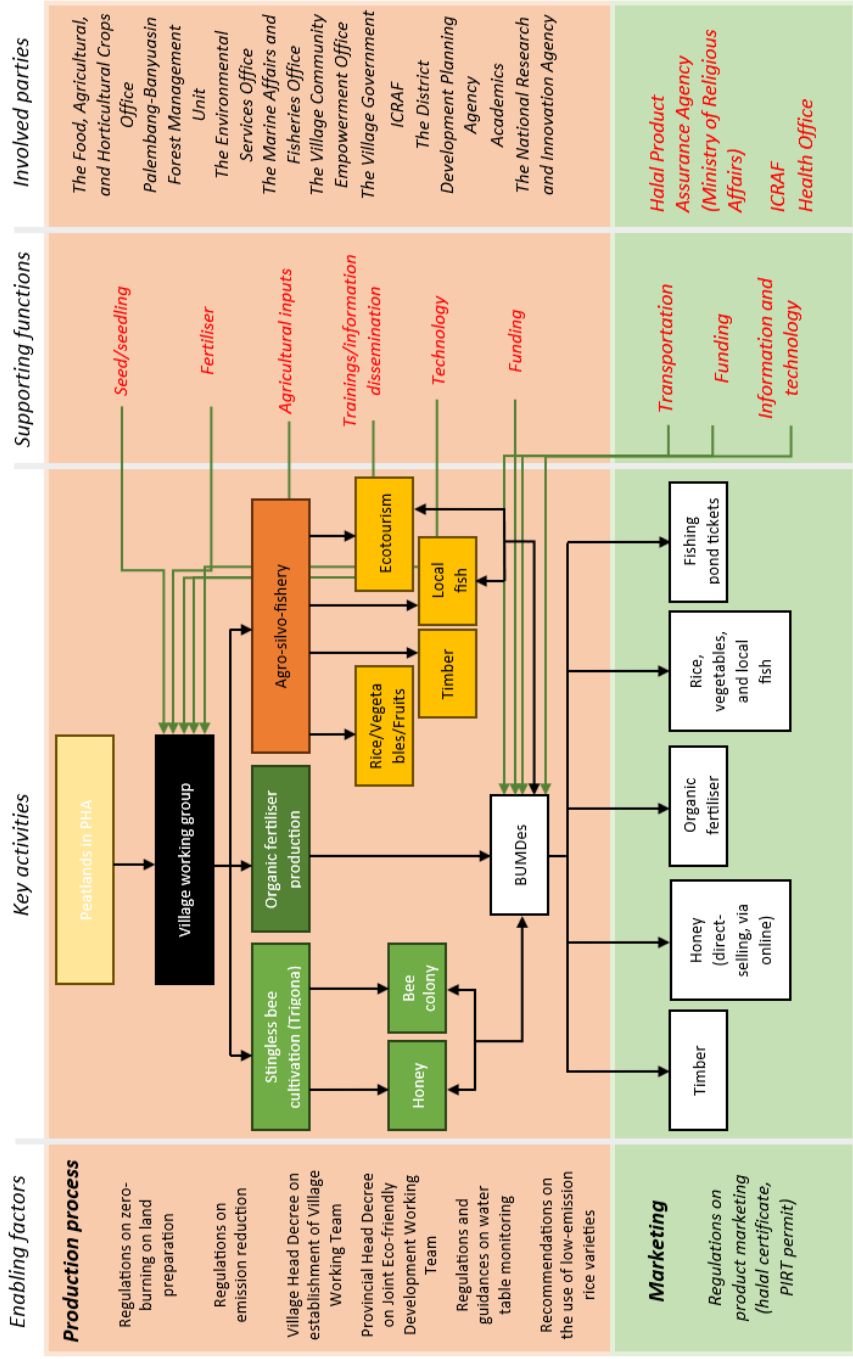


Agro-silvo-fishery design

- 2 ha agro-silvo-fishery demoplot and stingless beekeeping was developed in Baru Village.
- No-fire for land preparation applied in the demoplot
- Honey, rice and organic fertilizer produced by farmer group had been marked by BUMDes



Business model of agro-silvo-fishery and stingless beekeeping



Capacity building for farmer group



Training on zero burning technique on land preparation, business model development, and organic fertiliser production



Training on entrepreneurship, stingless beekeeping and harvesting methods

Multi-stakeholder engagement in developing agro-silvo-fishery system



The local government and private sectors involved in development of village-level business model.



In a development exhibition, farmers present their products to the Banyuasin Regent.



A community development organisation in Riau visit Baru Village.



- The Food Security Agency-certified rice.
- Solid and liquid organic fertilisers with tested nutrient content.
- Stingless bee honey with halal certification, a Home Industry Product (PIRT) permit, and Food and Drug Administration (BPOM) approval.
- Fishing ponds becomes an extra product of agro-silvo-fishery development.

Rahayu S, Suyanto, Novia CY, Hutasuhut J, Ismawan IN. 2024. *Business model of Agro-silvo-fishery in Baru Village, Rambutan Subdistrict, Banyuasin District. Bogor, Indonesia: World Agroforestry (ICRAF).*



Supported by:

Federal Ministry for the Environment, Nature Conservation, Nuclear Safety and Consumer Protection



INTERNATIONAL CLIMATE INITIATIVE

#PahlawanGambut
pahlawangambut.id

based on a decision of the German Bundestag

World Agroforestry (ICRAF) Indonesia Program

Jl. CIFOR, Situ Gede, Sindang Barang | Bogor 16115 [PO Box 161 Bogor 16001] Indonesia
Tel: +(62) 251 8625 415 ; Fax: +(62) 251 8625416 | Email: icraf-indonesia@cifor-icraf.org