

The Centre for Mutis Forest Honey Production and Marketing (*Sentra Madu Mutis*) in East Nusa Tenggara

Multi-stakeholder initiatives between Kanoppi and local stakeholders:

Environment and Forestry Agency, the Development Planning Agency of Timor Tengah Selatan, Forest Management Unit-FMU (KPH) of Timor Tengah Selatan, *Jaringan Masyarakat Mutis (JMM – forest honey harvesters)*, Village-owned enterprises (*BumDes*), NTFP Working Group East Nusa Tenggara

Integrated forest management in the Mutis Timau landscape

- Natural habitats for bees for forest-honey production, in the upstream of watershed hubs in West Timor (Mutis Timau Landscape)
- Upstream areas are important in preserving nature and maintaining environmental carrying capacity.

Challenges

Policy platforms at the provincial and district levels are needed for accelerating mainstreaming of integrated NTFP management in the provincial government's strategic priorities.

Activities

Kanoppi facilitated community-based Inclusive Business Model translating policy and regulatory framework at the provincial level into practices.

Legal basis:

1. Governor Regulation No. 36/2020 on Development of the Centre for Mutis Forest Honey Production and Marketing
2. Governor Letter of Decree on Organizational Structure of Centre for Mutis Forest Honey Production and Marketing or *Sentra Madu Mutis*

Rationale:

- Forest honey is one the most important NTFP Production in East Nusa Tenggara
- Production of Forest Honey from Mutis Timau Forest: about 50% of total production in East Nusa Tenggara Province
- Kanoppi villages: *Fatumnasi, Kuannoel, Bonleu, and Tutem*
- Honey production in these villages only: 5,000 liter/year.

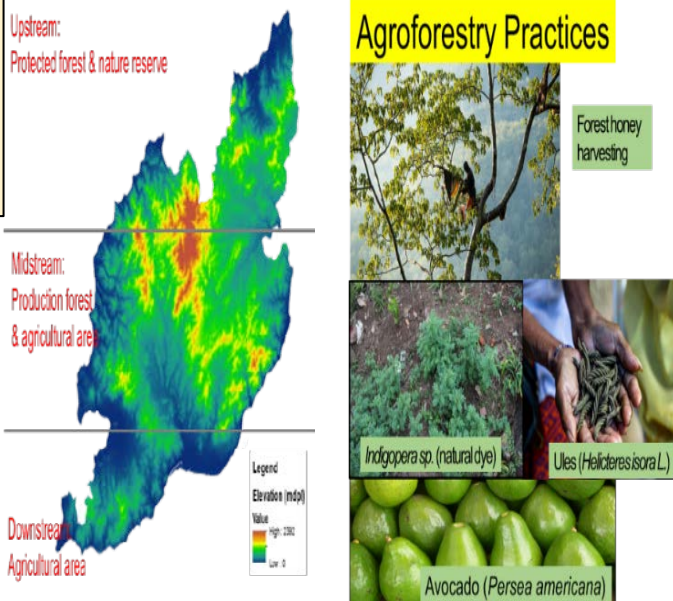
Supported baseline studies:

- Development of the baseline data on existing conditions of honeybees' hives, trees and habitat in Mutis forest (2019)
- The study of natural landscape of the Mutis Timau Forest Watershed (2019)
- Conducted by: CIFOR, WWF Nusa Tenggara Programme and Nusa Cendana University, & Forest Management Unit of Timor Tengah Selatan.

NTFPs Commercial Commodities in East Nusa Tenggara (Source: Governor Letter of Decree No. 404/KEP/HK/2018)



Sustainable honey harvesting practices: Maintaining Forest Landscape Mutis Timau



Villages: *Fatumnasi, Kuannoel, Bonleu, and Tutem*

Implications from the stipulated *Sentra Madu Mutis*:

1. Legal status:

- a. Confirmed under this governor letter of decree on the formal organizational structure of the Centre for Mutis Forest Honey Production and Marketing or *Sentra Madu Mutis*
- b. important for this community-based enterprises to develop partnership with micro-financing institutions, and other business entities

2. As one 14 prioritized commodities:

legally feasible to be included in the government planning and budgeting system: provincial district & village local government agencies budget responsible along the production and value chains.

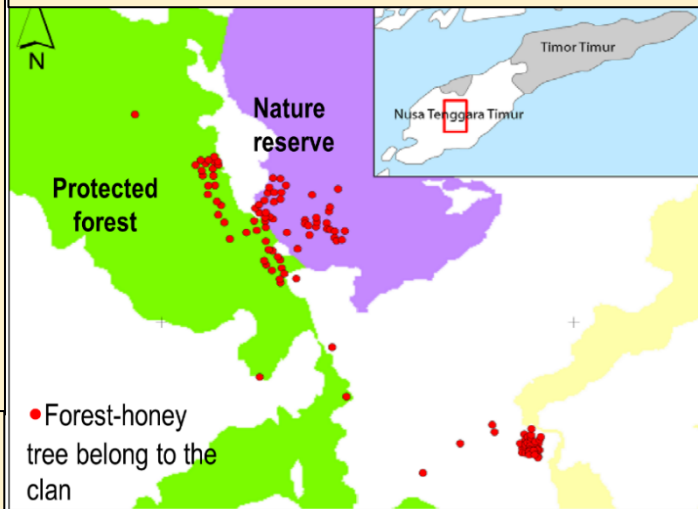
Vision of the *Sentra Madu Mutis*:

- Strengthening the local community's economy and improving the producers' capacities as small-scale enterprises
- Promoting the branding of the "Mutis Forest Honey" in the national/international markets
- Generating economic incentives to local communities to continue on-going culturally-based sustainable management practices

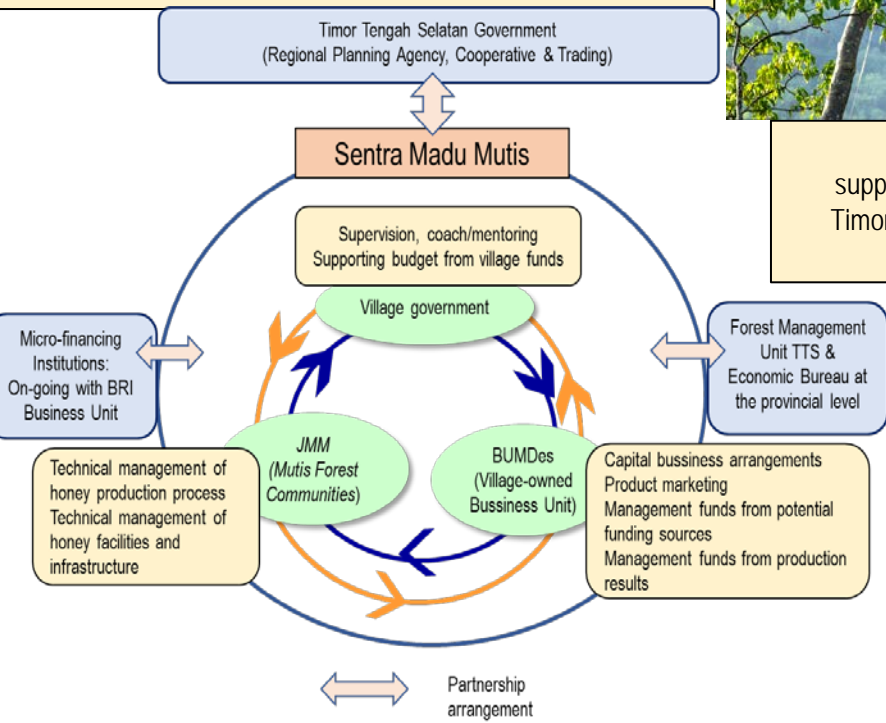
Business model and institutional arrangement:

Collaboration and partnership with local government at the village and district levels, microfinancing institutions, and overseeing by the Economic Bureau at the provincial level.

Clan-based (*SUF*): community access to harvest forest honey inside the forest



The new *Sentra Madu Mutis* building supported by the local government budget (APBD) of Timor Tengah Selatan: IDR 700 million (AUD 67,291) (October 2021)



CIFOR, WWF Nusa Tenggara Program, the Agency for Environment and Forestry at East Nusa Tenggara Province, the Development Planning Agency at TTS District, Forest Management Unit-FMU TTS, Nusa Cendana University: Ani Adiwinata, Sri Muslimah, dan Fatwa Susanti (CIFOR), Syafrudin Syafii, Yeni F. Nomeni, & M. Ridha Hakim (WWF Nusa Tenggara Program), Jenny (Environment and Forestry Agency of East Nusa Tenggara), Norman (Nusa Cendana University), Frans & Chris Koenuu (FMU TTS).