

# Building a more sustainable landscape, **TOGETHER**

The Center for International Forestry Research (CIFOR) is working together with public and private stakeholders in the Kwaebibirem-Atiwa landscape to co-design a Landscape Development Strategy that will support coordinated planning and action towards more sustainable and people-centred commodity production.



## The Kwaebibirem-Atiwa landscape at a crossroads

This project centres on two jurisdictions on the western fringes of the Atewa Range Forest Reserves in the Eastern Region in Ghana: Kwaebibirem Municipality and Atiwa West District.

The Atewa Forest is classified as a Globally Significant Biodiversity Area which provides critical ecosystem services and freshwater to surrounding farmlands and communities, as well as peri-urban and Greater Accra. Surrounding farms and off-reserve forests form part of the agricultural-forest mosaic in Ghanaian cocoa belt.

Kwaebibirem and Atiwa West jurisdictions have become hotspots for cash crops such as oil palm, cocoa, and rubber, as well as an important landscape for artisanal mining. Local economic development, however, is sometimes at odds with climate conservation efforts to protect the Atewa Forest and fragmented trees on farms. This project supports stakeholders in the Kwaebibirem-Atiwa landscape to implement responsible and inclusive land-use planning for more sustainable commodity-driven growth.



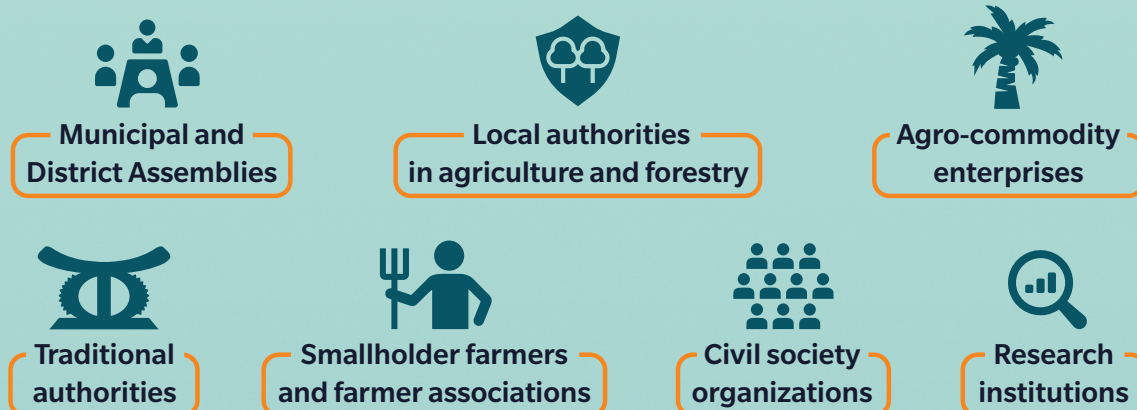


## Sustainability pillars



## An inclusive and collaborative approach

For the Landscape Development Strategy to adequately respond to local priorities and interests, it must be based on a participatory and adaptable governance structure that promotes learning and improved coordination between key stakeholders. To succeed, this structure must integrate:



These actors will participate in a multi-stakeholder Kwaebibirem-Atiwa Landscape Platform. The Landscape Platform is supported by four commodity-based Working Groups and four community-level Innovation Platforms to engage landscape actors working at different levels:

### Kwaebibirem-Atiwa Landscape Platform

A multi-stakeholder platform to co-design a Landscape Development Strategy for Kwaebibirem and Atiwa West. The Development Strategy will incorporate the 3Es of sustainability: Economy, Ecology and Equity.

The platform is co-hosted by Kwaebibirem Municipal Assembly and Atiwa West District Assembly. Participants include representatives from the public sector, local leaders, commodity sectors, farmers, and civil society organizations.

The platform meets biannually to integrate recommendations from Working Groups and Innovation Platforms into a cohesive Landscape Development Strategy.

#### Working groups

Working Groups are commodity-focused. Participants are nominated by the platform hosts and stakeholders to represent a diverse cross-section of actors in each sector.

There are currently four active Working Groups: Oil Palm, Cocoa, Rubber and Mining.

Each Working Group will draft a development strategy for their commodity sector which aligns with the district development priorities.

#### Innovation platforms

Innovation Platforms are community-based, with two communities representing each jurisdiction.

Communities form focus groups to provide their inputs into the design process and provide local feedback to proposed interventions and development pathways put forward by the Working Groups and Landscape Platform.