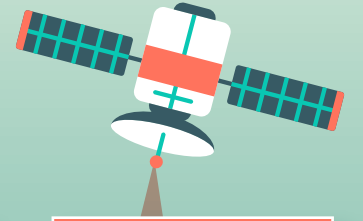


Role of monitoring to assess the impact of NbS



There is a real opportunity to integrate systematic assessments of **ecosystem health with citizen science** to track the interventions on the ground and also the understand the processes (of degradation and restoration)

In order to track the effectiveness of Nature-based Solutions, we need to assess **multiple indicators at relevant spatial scales**

We have the **tools and methods to measure and track** the underlying processes of land degradation

This means that we can measure the effectiveness of interventions on **soil organic carbon and understand sequestration and climate change mitigation**, for example.

Developing capacity to **conduct assessments** and to **interpret the results/data**

