



GCS REDD+ Project Advisory Group (PAG)

This brochure outlines the important role, main activities and contributions of the Global Comparative Study on REDD+ Project Advisory Group (PAG).

Who are the GCS REDD+ Project Advisory Group (PAG) members?

The PAG consists of a maximum of 15-20 experts per country. These experts in Peru, Indonesia, Brazil and the Democratic Republic of Congo (DRC) will participate as co-producers of knowledge through science-policy platforms to support the uptake of scientific information on policy processes and will have first access to research outputs, as well as the possibility to contribute to them (Figure 1).

Government agencies, donors, academia, civil society organisations, indigenous organisations, private sectors, and community - based organisations

Traditional actors in the forests and climate change policy arena, but also actors from other sectors (e.g., agriculture, finance, development)

Organisations and individuals who directly engage in high-level REDD+ policy processes

15-20 experts per country



Figure 1. GCS-REDD+ Project Advisory Group

The important role of the PAG

Figure 2 describes the important role of PAG.

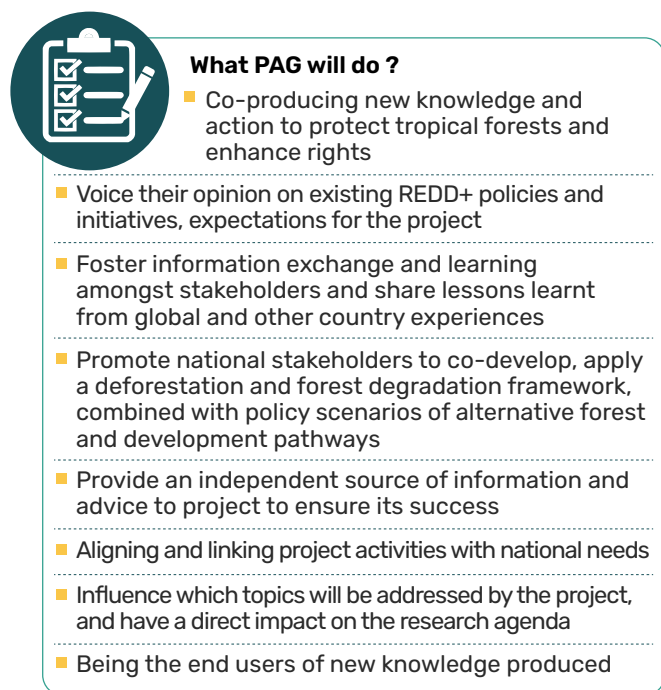


Figure 2. Important role of the PAG

The benefits of being a PAG member

Figure 3 describes key benefits for being PAG members.

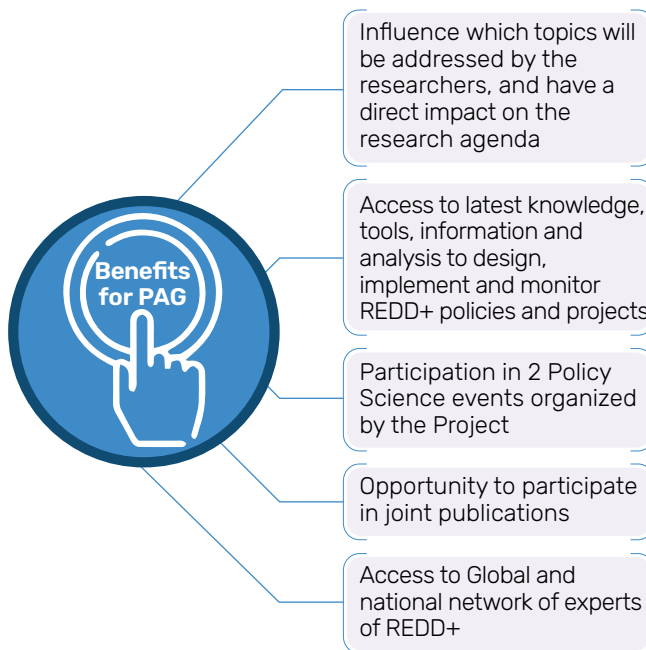


Figure 3. Benefits of being a PAG member



Who to contact for additional information?

Project leader:

Pham Thu Thuy
(t.pham@cgiar.org)

Monitoring, Evaluation, Learning, and Impact Evaluation (MELIA):

Jean-Charles Rouge
(J.Rouge@cgiar.org)

Project Coordinator:

Levania Santoso
(l.santoso@CGIAR.ORG)

Indonesia Country Coordinator:

Bimo Dwi Satrio
(B.Dwisatrio@cgiar.org)

Peru Country Coordinator:

Juan Pablo Sarmiento Barletti
(J.Sarmiento@cgiar.org)

Brazil Country Coordinator:

Richard Van der Hoff
(richard.vanderhoff@inteligenciateritorial.org)

DR Congo Country Coordinator:

Blaise-Pascal Ntumenyerwa Mihigo
(blaisepascalmihigo@gmail.com)

Thank you for your support and interest in being part of the GCS REDD+ project!

© Natasha Elkington/CIFOR

PARTNERS



WAGENINGEN
UNIVERSITY & RESEARCH



Norges miljø- og
biovitenskapelige
universitet



UNIVERSITY OF HELSINKI



UNIVERSITE
DE KINSHASA



Stockholm Resilience Centre
Sustainability Science for Biosphere Stewardship



UNIVERSITY OF LEEDS



DONORS



CIFOR-ICRAF

The Center for International Forestry Research (CIFOR) and World Agroforestry (ICRAF) envision a more equitable world where trees in all landscapes, from drylands to the humid tropics, enhance the environment and well-being for all. CIFOR and ICRAF are CGIAR Research Centers.

